

MONTHLY MEMBERSHIP PROGRESS REPORT

District 325 L

Results as of: 6/30/2024

GMT:

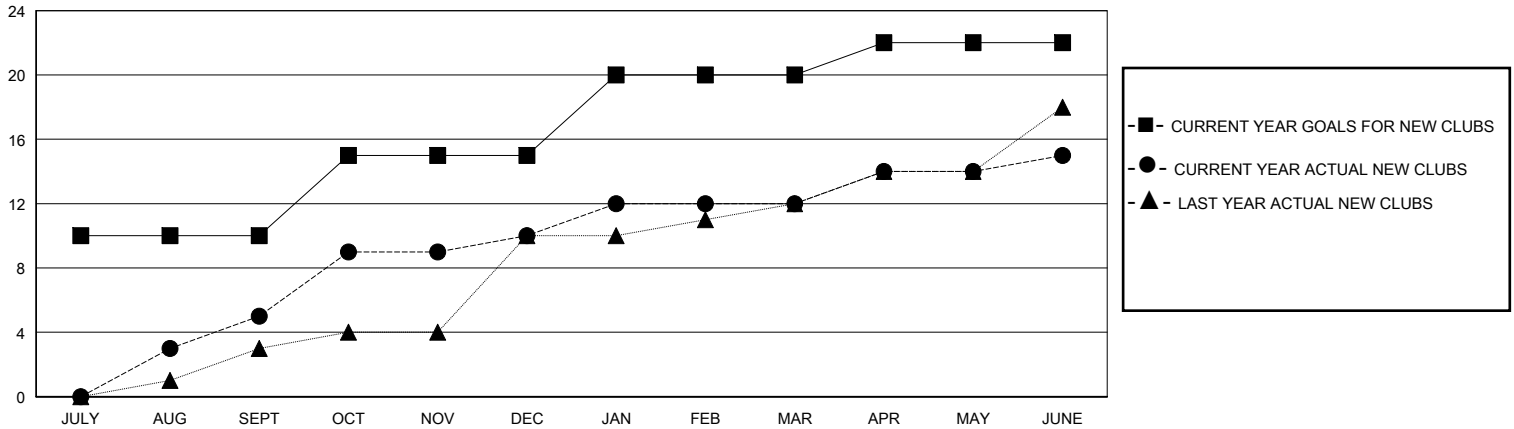
LOCATION NEPAL

GMT CA

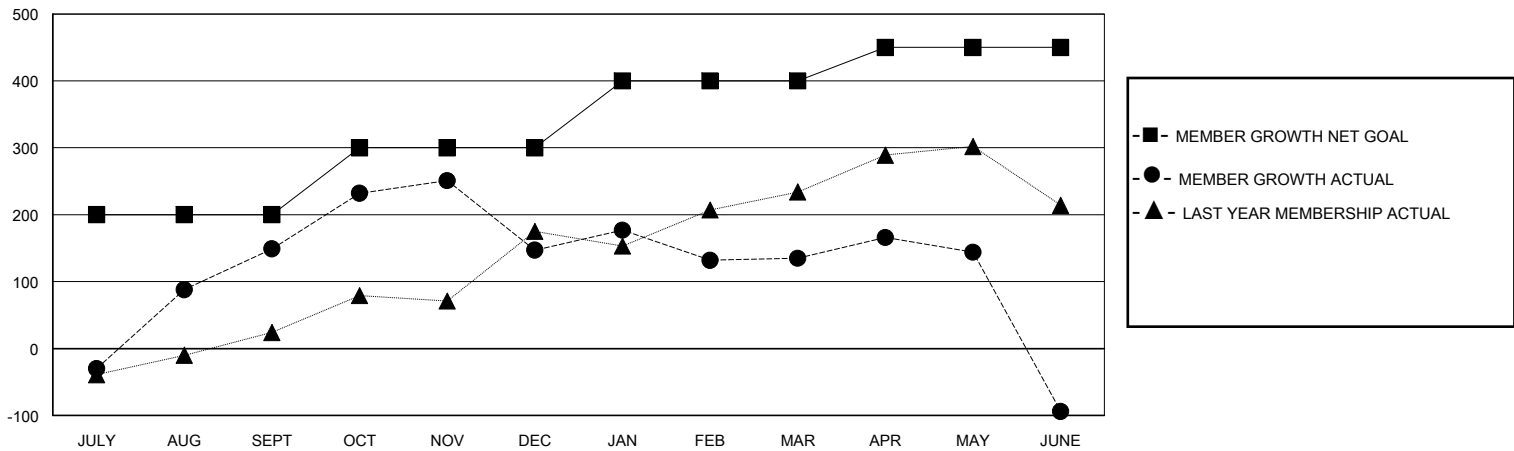
Clubs			
RESULTS FOR 2023-2024			
QUARTER	NEW CLUB GOAL	NEW CLUBS	DROPPED CLUBS
JULY/AUG/SEPT	10	5	2
OCT/NOV/DEC	5	5	5
JAN/FEB/MAR	5	2	3
APR/MAY/JUNE	2	3	4

Members			
RESULTS FOR 2023-2024			
QUARTER	MEMBER GROWTH NET GOAL	MEMBER GROWTH ACTUAL	DROPPED MEMBERS ACTUAL (including transfers)
JULY/AUG/SEPT	200	271	115
OCT/NOV/DEC	100	174	171
JAN/FEB/MAR	100	139	127
APR/MAY/JUNE	50	141	338

GOALS AND ACTUAL NEW CLUBS CUMULATIVE



GOALS AND ACTUAL MEMBERS CUMULATIVE



DROPPED CLUBS: 14	
DROPPED MEMBERS	
DECEASED	2
CLUB CANCELLED	241
OTHER	507
TOTAL	750

79 CLUBS OF 115 ADDED 1 OR MORE NEW MEMBERS

GENDER DISTRIBUTION	
MALE	1,653 (69.95%)
FEMALE	701 (29.67%)

[CLICK HERE FOR CUMULATIVE MEMBERSHIP DATA](#)

TOTAL FAMILY UNIT MEMBERS	1,697
FAMILY MEMBERS PAYING HALF DUES	1,170